

PHOTO SUBMISSION GUIDELINES



Submission guidelines – How to make the right snapshots.

Dear model,

When you send your application or submit yourself to be a model for Ragazza Model Management, we need your snapshots. These snapshots are necessary for our bookers to see your face and body.

Next to your portfolio, your snapshots are really important.

Snapshots are just simple pictures without make-up. They don't have to be professionally taken.

You could ask your friend or a relative to take some of these for you with an ordinary digital camera.

The snapshots need to be all in bikini, string or lingerie against a white wall, without make-up.

Please do not wear a hipster. Just use a small bikini or lingerie. We need to have a clear view of your body.

The snapshots must contain the following:

- Close-ups (front and both sides with hair loose and hold together)
- Half body (front and both sides with hair loose and hold together)
- Full body (front, both sides and back with hair loose and hold together)
- All photo's in high resolution without retouches please.

Please send as many pictures as possible. Remember that we need to see your natural beauty and your body. Do not pose! There is no need to make the pictures 'small' to send via email. Just use high resolution pictures of at least 1000 pix high.

On the next pages you find some examples of how the snapshots must be.

Please make your snapshots like these.

PHOTO SUBMISSION GUIDELINES



THINGS TO REMEMBER FOR YOUR SNAP SHOTS:

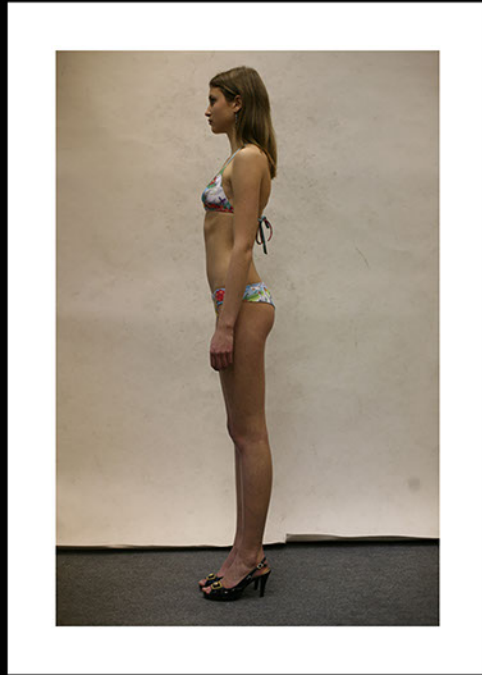
- These photos should not be professional.
- Do not wear makeup.
- Do not pose.
- Background should be a plain wall or bed sheet.

THINGS TO REMEMBER

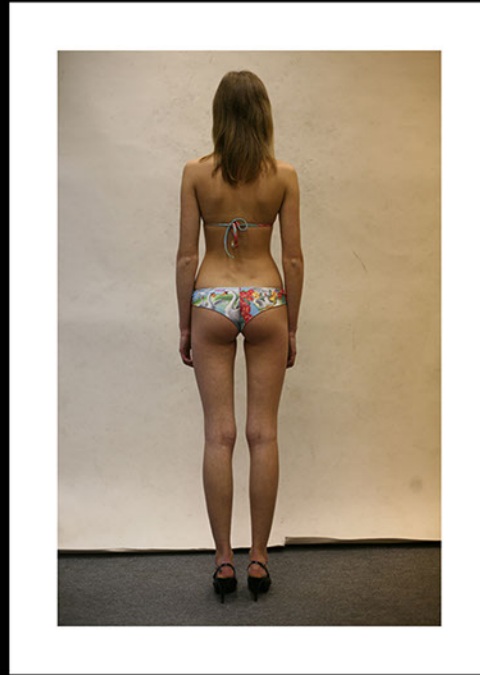




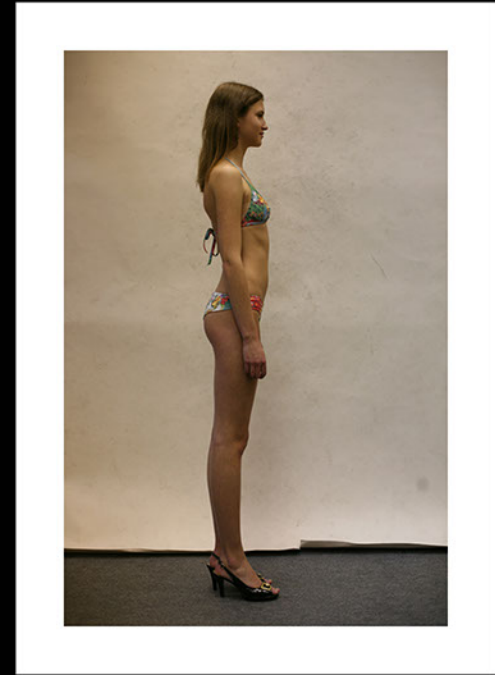
FULL LENGTH FACE FORWARD



FULL LENGTH PROFILE LEFT



FULL LENGTH BACK SIDE



FULL LENGTH PROFILE RIGHT

SAMPLE WOMEN'S PHOTOS





Use a flexible measuring tape as used by dressmakers.

BUST

Don't squish yourself -- measure all the way around your bust and back right at your nipple line, and make sure the tape measure is not lower.

WAIST

Measure wherever it is the smallest (if you have "no waist" go around yourself right at the navel line).

HIPS

Measure at the very biggest part -- even if that is so low that you are almost on the top of your thighs.

MEASURE YOURSELF THE RIGHT WAY

